



## 2025–26 FINANCIAL YEAR

# Budget message

### BUILDING A THRIVING, INCLUSIVE AND SUSTAINABLE CLARENCE.

City of Clarence has adopted its 2025–26 Annual Budget, a responsible and community-focused plan that reflects our commitment to essential services, liveability, and the strategic growth of our city.

This year's budget continues to prioritise the infrastructure and services that matter most—roads, footpaths, stormwater, parks, and community facilities—while also investing in the future of our growing region. Our focus is on making everyday life better and more connected for all residents, while remaining financially responsible in a time when cost-of-living is a real issue.

We're directing \$8.28 million to upgrading footpaths, kerbs, and pedestrian infrastructure to make our streets safer and more accessible. Another \$6.1 million is earmarked for road renewals and upgrades to maintain a high-quality, reliable transport network.

Stormwater infrastructure remains a top priority. More than \$4 million has been allocated to reduce flood risk and protect public and private spaces, including a major \$2.6 million upgrade to Wentworth Street in Belleve.

To support the delivery of this program, we are also continuing to invest in our workforce—resourcing additional positions and upskilling



**Photo:** Beach Street Stormwater upgrade

our team to ensure high-quality, safe, and effective operations.

We recognise the financial challenges facing many households. That's why the 2025–26 budget proposes an average rate increase of 4.85 per cent, which is 1.6 percentage points lower than last year. This carefully balanced approach ensures essential services are maintained without placing unnecessary strain on residents.

We have also updated the rating structures for short-stay accommodation and vacant commercial and industrial land to ensure the system remains fair and more accurately reflects land use.

As part of our long-term planning, Council recently acquired the office buildings at 30 Gordons Hill Road for \$23.5 million through an off-market sale. This significant strategic purchase within the Clarence CBD opens the door to exciting possibilities for civic, commercial, or community use in alignment with the City Heart Plan.

This budget makes targeted investments in facilities that support families, young people,

and local groups. We're allocating \$710,000 for the redevelopment of Rosny Early Learning, \$200,000 to plan the Rosny Farm Creative Industries Precinct, and \$723,000 for upgrades to local sporting facilities.

We're also supporting youth development through the Rokeby Youth Centre, investing in community events that celebrate our city's diversity, and continuing to implement our Reconciliation Action Plan.

A new cultural highlight for 2025 is 'Nupiri-ti Palawa', a four-week celebration of Aboriginal art across Greater Hobart. We're also proud to mark 30 years of the Clarence Jazz Festival, with an expanded and revitalised program.

Encouraging healthy lifestyles and access to natural spaces remains a focus. We've allocated \$365,000 to enhance key walking tracks and trails, including the Single Hill Track and the creation of a Rosny Parklands Circuit.

**This budget reflects our shared values: fairness, sustainability, and community. It ensures Clarence continues to thrive—now and for generations to come.**

### THE \$26.7 MILLION CAPITAL PROGRAM IN THE 2025–26 BUDGET WILL INCLUDE:

Wentworth Street Stormwater Upgrade <b>\$2.6 million</b>	Footpaths Missing Links – Annual Program <b>\$450,000</b>	Single Hill Track – Summit to Kirra Road <b>\$150,000</b>	South-East Regional Parklands Concept Development <b>\$130,000</b>
Rosny Early Learning Centre Redevelopment <b>\$710,000</b>	Lindisfarne Ferry Terminal Infrastructure <b>\$250,000</b>	Duntroon Drive Detention Basin, Rokeby <b>\$300,000</b>	For more info visit <a href="http://ccc.tas.gov.au">ccc.tas.gov.au</a>
Malunna & Beach Road Intersection Upgrade <b>\$695,000</b>	Geilston Bay Oval No. 1 upgrades <b>\$180,000</b>	Cambridge Park Wetlands Gross Pollutant Trap <b>\$285,000</b>	



**A reminder about using pedestrian crossings on Cambridge Road.**

**Page 05**

## 02 Mayor's Message

A message from our Mayor Brendan Blomely

## 03 Property evaluations

House evaluations are underway for 2025-26

## 06 Looking forward

Messages from your Councillors

# Mayor's message

## AS WINTER WRAPS CLARENCE, IT'S A PERFECT TIME TO CELEBRATE THE WARMTH THAT TRULY MATTERS.

That warmth was beautifully reflected at this year's Citizen of the Year awards, held on 20 May at Bellerive Oval.

It was a special evening celebrating quiet achievers and dedicated volunteers who make a big difference in our community.

Our 2025 Citizens of the Year, Ryan Wiggins and Amanda Steele, were recognised for their kindness, advocacy, and community spirit – the very qualities that make Clarence shine.

The evening was made even more memorable by the Clarence High School band, who delighted guests with their music and brought a wonderful energy to the event.

Across our beautiful city, we continue to stand united against racism alongside our Greater Hobart neighbours.

Together, Clarence joins Brighton, Hobart, Glenorchy, Kingborough and Sorell councils to send a clear message: everyone belongs, and racism has no place in our communities. I took part in the We Stand Together Against Racism walk along Hobart's waterfront on Friday, 21 March 2025, which officially launched the campaign. Together, we are stronger, more compassionate, and more inclusive.

Here in Clarence, kindness is more than a word – it's a way of life.

Our Kindness Campaign is a reminder that behind every phone call, email, or social media comment is a real person – often a local, just like you.

With nearly two-thirds of our 400-strong council team living right here in Clarence, we're working every day to make our city better.

Passion for our community is welcome, but let's keep our conversations respectful.



**Photo (L-R):** Joel and Kate Clifford from The Salvation Army Clarence City, Mayor Brendan Blomeley, Highly Commended Stephen Bourke, Senior Citizen of the Year Graeme Rainbow and Young Citizen of the Year Melodee-Ruth Estcourt

Kindness matters, and together, we can build a stronger, more connected Clarence.

That spirit of community shines through community programs like Eating with Friends, which continues to grow from strength to strength. This initiative is one of the true gems of our city – not just offering an affordable meal, but creating a space where friendships flourish.

With monthly lunches at welcoming venues like the Richmond Arms, Risdon Brook Hotel, and others, it's heartening to see so many residents coming together.

**“Together, we are stronger, more compassionate, and more inclusive.”**

Whether you're sharing a meal, showing kindness, standing up for what's right, or helping to keep Clarence clean and beautiful – thank you.

**Brendan Blomeley**  
City of Clarence Mayor

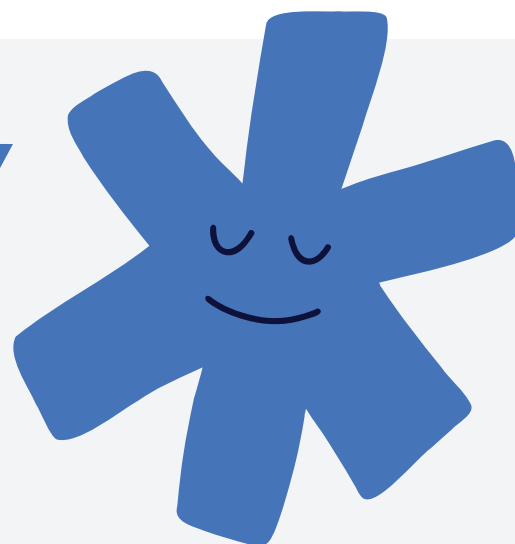
## WE ARE PART OF YOUR COMMUNITY

### WE WORK AT COUNCIL BECAUSE, LIKE YOU, WE LOVE THIS CITY.

We're committed to making the place we live and work in, better for us all. And like you, we have the right to feel safe and respected at work, free from the fear of aggressive or threatening behaviour.

In our community and in our workplace, acts of abusive or belittling behaviour, bullying, or threats are never ok.

When we have a difference of opinion, please act with kindness and respect. Productive conversations build stronger communities.





## RATE RE-EVALUATION

# Clarence property evaluations underway

## CLARENCE PROPERTY EVALUATIONS UNDERWAY IN 2025–2026

Starting in July 2025, the Office of the Valuer General (OVG) will begin a fresh property valuation across the City of Clarence – a process undertaken approximately every six years. This comprehensive review ensures property values are current and reflective of market conditions.

As part of the valuation process, the authorised valuers may visit properties in person to collect data. The OVG advises that all valuers carry official identification and are permitted by law to access land for valuation purposes. If residents are unsure about someone on their property, they are encouraged to ask for ID.

Commercial or industrial property owners may receive a direct request from the OVG or authorised valuer for current market information.

### So, what does this mean for rates?

It's important to understand that a change in your property's valuation doesn't automatically mean a change in the total amount of rates collected by us. Instead, valuations are used to redistribute how rates are shared among property owners.

### Here's how it works:

If your property's new value has increased more than the average across Clarence, you may pay a larger share of the overall rates.

If your property's value has increased less than the average or even decreased, your share of the rates could go down.

The total amount of rates collected by City of Clarence remains the same, unless there's a rate increase decided through the annual budget process or as part of adjustments made in bi-annual revaluations of the Capital Value and Assessed Annual Value (AAV).

For further details, including FAQs and contact information, visit the Office of the Valuer General website:

[nre.tas.gov.au/land-tasmania/office-of-the-valuer-general](https://nre.tas.gov.au/land-tasmania/office-of-the-valuer-general)



## Youth services opens new centre in Rokeby

### YOUTH SERVICES HAS OFFICIALLY RELOCATED TO A NEW HOME AT 85 TOLLARD DRIVE, ROKEBY, OFFERING A WELCOMING SPACE FOR YOUNG PEOPLE IN THE COMMUNITY.

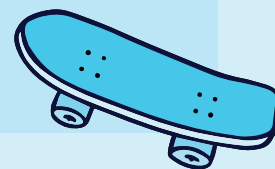
The centre features an indoor basketball court, dedicated art and recreation areas, and new health and wellbeing facilities. Outside, young people can enjoy a playground, exercise equipment, and a skate park – creating more opportunities for social connection and active lifestyles.

The move supports a growing focus on youth engagement in the area and ongoing work with organisations like Mission Australia's Youth Beat, Home, and Workskills, aimed at expanding programs and support for local young people.

The new centre is now open and welcoming visitors.

Find out more about Youth Services at:

[ccc.tas.gov.au/youth](https://ccc.tas.gov.au/youth)



## General Grants program now open

We are pleased to announce that the General Grants Program re-opened on 1 July 2025. This is an exciting opportunity for individuals, groups and organisations across our community to receive financial support for projects that benefit our city and its residents.

Funding is available through four key streams:

- Quick Response Grants
- Community Grants
- Cultural and Creative Grants
- Environment and Biodiversity Grants

Eligible projects, programs and activities may receive grants of up to \$10,000.

Whether you're part of a community group planning a local event, an artist creating a

public artwork, or a group working to protect and enhance our natural environment, we encourage you to apply.

### How to apply

Detailed information is available on our website:

[ccc.tas.gov.au/community-grants](https://ccc.tas.gov.au/community-grants)

For any enquiries or support with the application process, please contact us on 6217 9773.

# Community spirit alive and well

**ON 20 MAY, THE CLARENCE COMMUNITY GATHERED TO CELEBRATE INDIVIDUALS AND GROUPS WHOSE SELFLESS EFFORTS UPLIFT OTHERS. WITH LIVE MUSIC FROM THE CLARENCE HIGH SCHOOL BAND, THE EVENT HONOURED ACHIEVEMENTS IN ENVIRONMENTAL CARE, YOUTH LEADERSHIP, AND COMMUNITY SERVICE.**

## Citizen of the Year – Joint Winners

Amanda Steele and Ryan Wiggins shared the honour this year. Amanda is a dedicated carer and organiser of major donation drives supporting thousands. Ryan, a disability advocate after a 2021 spinal injury, raises awareness through events like the RW11 Spinal Swing Golf Day. His motto: "Movement is a privilege."

## Highly Commended – Citizen of the Year

Stephen Bourke, beloved school crossing guard, was recognised for his joyful presence and community spirit.

## Senior Citizen of the Year

Graeme Rainbow, conservation leader of 26+ years, leaves a legacy of thriving coastal ecosystems and stronger community ties.

## Young Citizen of the Year

Melodee-Ruth Estcourt, a young leader and Vinnies State Council member, was honoured for her volunteerism and initiative.

## Community Event/Organisation of the Year

Celebrating its 10th year, the Clarence Community Christmas Brunch, hosted by The Salvation Army Clarence City and the City of Clarence, brought festive cheer to over 170 guests.

**Clarence is proud to honour these individuals and organisations, whose actions continue to inspire, connect and uplift our region.**

**Congratulations to all our 2025 award winners!**



**Photo (L-R):** Mayor Brendan Blomeley, Citizens of the Year Ryan Wiggins and Amanda Steele

# What's happening in Clarence

**WE HAVE A RANGE OF EXCITING PROJECTS CURRENTLY UNDERWAY ACROSS CLARENCE. HERE'S A LOOK AT WHAT'S HAPPENING:**

## Clarendon Vale Oval Works

Works have commenced on upgrades to Clarendon Vale Oval. Work includes the construction of a sports pavilion, social space, kitchen/food prep area, first aid room, club storage facilities, shower/toilet amenities and a new gravel car park.

## Open Space Strategy Consultation

The Open Space Strategy will guide how we plan, manage, and invest in public open spaces across Clarence – now and into the future. Consultation is open from now until 22 July 2025.

## Droughty Peninsula Structure Plan

Planning is underway for Droughty Peninsula to shape the long-term vision for land use, environmental protection, and development in the area. Community consultation will be held in the coming months.

## Waverley Flora Park Reserve Management Plan 2025–2035

The Waverley Flora Park Reserve Management Plan is now being reviewed and updated to reflect current priorities and community aspirations for the area's reserves. The updated plan aims to protect and enhance the cultural, social, and natural values of Waverley Flora Park while maintaining its rich biodiversity. Updates will be available at: [yoursay.ccc.tas.gov.au](https://yoursay.ccc.tas.gov.au)

Consultation will be held in the coming months.

## Parramore Street, Richmond

We're undertaking stormwater improvements along Parramore Street in Richmond as part of broader infrastructure upgrades in the area. These works aim to enhance drainage and reduce flooding risk, with construction expected to progress through 2025.

## Fontain Circle, Rokeby

Footpath construction started 22 May with estimated time of completion at 6-8 weeks. The work will include some kerb repairs and work at driveways to ensure the continuity of the footpath.

## Beach Stairs, Lauderdale

Construction of new beach access stairs at Eumatala and Aragoon Street entrances has begun.



## Cambridge Dog Park

Construction of the new Cambridge Dog Park at Cambridge Oval recently commenced and is due to be completed in early 2026 (weather permitting).

## Mortimer Bay Coastal Trail

Trail upgrade and resurfacing works will be undertaken on the section of track between the car park at the southern end of Gorrings Beach (off Gellibrand Drive and Tradewind Terrace).

## Clarence Mountain Bike Park - Meehan Range

New public shelters will be installed at the main car park and Grassy Valley trail hubs.

Stay up-to-date on some of our major and ongoing projects including roadworks, facility upgrades and works within our natural areas: [ccc.tas.gov.au/works](https://ccc.tas.gov.au/works)

## Upcoming Consultations

Coastal Access Strategy, Bayview Park, Lauderdale Upgrade Sports Facilities Strategic Plan.





STRUCTURE PLAN

# Droughty Peninsula community consultation

**WE'RE WORKING TO SHAPE A SUSTAINABLE AND VIBRANT FUTURE FOR OUR GROWING COMMUNITY AND PART OF THIS WORK IS THE DEVELOPMENT OF THE DROUGHTY PENINSULA STRUCTURE PLAN.**

This Structure Plan will guide the long-term growth of the Droughty Point Peninsula, including Tranmere and Rokeby, through a strategic framework. It will ensure new neighbourhoods are well-connected, environmentally responsible, and supported by the infrastructure and services our residents need.

The Plan follows Council's approval of the revised Skylands Master Plan in December 2023. While the Master Plan is the vision for approximately 80 per cent for the area, the Structure Plan looks at the practical and technical aspects of how the vision can be achieved.

Together, the Skylands Master Plan and the Droughty Peninsula Structure Plan will pave the way for approximately 3,000 new homes to be delivered over the next 30 years across 350 hectares of prominently privately owned land, and a small percentage of public land.

As we plan for the future, we are seeking community input to help shape the Structure Plan.

The draft plan will address a range of factors including the area's visual character, environmental constraints, transport and movement needs, community services and facilities, and how to integrate future development with our existing suburbs.

Consultation is open from 25 June to 6 August, and will include two community information sessions. We encourage everyone to get involved and have your say because your voice will help shape a plan that reflects the needs and values of the Clarence, and Greater Hobart community.



## Important reminder

**THERE HAS BEEN COMMUNITY CONCERN RAISED REGARDING THE PEDESTRIAN CROSSING POINTS ALONG CAMBRIDGE ROAD IN BELLERIVE VILLAGE.**

Please note, as there are no white parallel strips (zebra crossing) marked on the road, vehicles are not legally required to give way to pedestrians.

The crossing simply provides pedestrians with a shorter distance to cross if they need to stop half-way for oncoming vehicles in this busy area.

While many drivers do slow down out of courtesy, it's important to remember that pedestrians must give way to traffic and only cross when it is clearly safe to do so.

To stay informed and find out how to participate, visit: [yoursay.ccc.tas.gov.au/droughty-peninsula-structure-plan](https://yoursay.ccc.tas.gov.au/droughty-peninsula-structure-plan)

# WE STAND TOGETHER AGAINST RACISM

Learn more about how we can all play a part in building a welcoming community.  
[standtogetherhobart.com](https://standtogetherhobart.com)



*"Where you come from doesn't define your worth - everyone is equal, and everyone has a story. Foxy has taught me the value of inclusion, respect, and embracing different cultures."*

Sam Siggins - Lauderdale Footballer



Councils of Greater Hobart stand together against racism.



Kingborough



## COUNCILLOR FOCUS

# From your Councillors

**COUNCILLOR BREE HUNTER**

Have you ever considered standing for Council? If you care about the future of our community, now's the time to start thinking ahead – local government elections will be held in October 2026. Council needs diverse voices – different ages, backgrounds and life experiences – to reflect and serve our community well.

If you're thoughtful, respectful, and want to make a real difference, I encourage you to consider running. I'm happy to chat if you'd like to know more about what's involved or how to get started. There's never a perfect time – so why not take the first step now?

**COUNCILLOR BETH WARREN**

Clarence is leading the way on resource recovery and smarter waste management.

We were the first Council to introduce soft plastics recycling in southern Tasmania, and our free tyre disposal program was a sell-out.

We're investigating how to divert other problematic waste, such as mattresses, from landfill. We continue to plan for a state-of-the-art FOGO processing solution in southern Tasmania, working closely with key industry partners and stakeholders.

We're confident we can develop a viable solution to transition our Green Waste service to include food organics, supporting a more sustainable and integrated organics recovery system in the near future.

**COUNCILLOR DANIEL HULME**

In Greater Hobart, 14 per cent of dwellings are flats, apartments or semi-detached houses, compared to 27 per cent Australia-wide.

We need a greater diversity of housing styles to suit people in different circumstances at different stages of life, and to improve affordability.

Higher density around activity centres and transport corridors would make more efficient use of infrastructure, encourage more active transport, make public transport more efficient, improve access to employment and commercial services, and encourage more use of public open space.

State and local government need to work together to drive policies and strategies that will encourage greater housing diversity.

## Your representatives

**Mayor  
Brendan Blomeley**

0413 972 307  
clr\_bblomeley@ccc.tas.gov.au

**Daniel Hulme**

0447 000 867  
clr\_dhulme@ccc.tas.gov.au

**Tony Mulder**

0428 685 337  
clr\_tmulder@ccc.tas.gov.au

**Deputy Mayor  
Allison Ritchie**

0474 356 640  
clr\_aritchie@ccc.tas.gov.au

**Bree Hunter**

0497 953 187  
clr\_bhunter@ccc.tas.gov.au

**James Walker**

0421 320 669  
clr\_jwalker@ccc.tas.gov.au

**Jade Darko**

0401 420 208  
clr\_jdarko@ccc.tas.gov.au

**Richard James**

0418 135 808  
clr\_rjames@ccc.tas.gov.au

**Beth Warren**

0438 439 219  
clr\_bwarren@ccc.tas.gov.au

**Emma Goyne**

0418 396 040  
clr\_egoyne@ccc.tas.gov.au

**Wendy Kennedy**

0438 100 446  
clr\_wkennedy@ccc.tas.gov.au

**Heather Chong**

0408 604 509  
clr\_hchong@ccc.tas.gov.au



### Get in touch

03 6217 9500  
–  
38 Bligh Street, Rosny Park,  
Tasmania 7018, Australia

PO Box 96, Rosny Park  
TAS 7018  
–  
clarence@ccc.tas.gov.au



ccc.tas.gov.au



/ClarenceCityCouncil



@cityofclarence