



NEW INITIATIVE

Tip vouchers for bulky waste

WE'RE LAUNCHING A NEW WASTE INITIATIVE TO HELP HOUSEHOLDS DISPOSE OF BULKY ITEMS THAT CAN'T GO IN YOUR REGULAR BINS, SUCH AS HOUSEHOLD ITEMS OR LARGE GREEN WASTE.

The program will run as a trial until 30 June 2026 and provides a flexible alternative to kerbside hard waste collections. Hard waste collections were discontinued in 2023 due to difficulties securing a service provider, the high cost (almost \$1 million), and because around 95 per cent of collected material was sent to landfill. A voucher system is a more contemporary, sustainable way to support responsible disposal and improve recycling and resource recovery.



Tip vouchers are being trialled after a regional investigation on kerbside bulky waste collection in Southern Tasmania.



What you no longer need could be reused, sold or given a second life.

How it works

Each residential property in Clarence is eligible for one voucher, which covers the minimum gate fee at the Mornington Park Waste Transfer Station.

The voucher allows for:

- up to 100kg of general waste or mixed loads, or
- up to 180kg of green waste or **recoverable** items (if the load is a single material type).

Recoverable items include cardboard, e-waste, batteries, metals and other household materials.

The minimum gate fee amount was chosen because it allows for more than the average weight of a hard waste collection when it last took place. If your load is heavier than what's allowed, or includes materials not covered by the voucher, any additional costs will be payable at the weigh bridge.

Who can use the voucher?

- Vouchers will be issued to the rate payer of properties who have a general waste bin.
- You will be able to register online and download a digital voucher. We can provide support to anyone who is unable to access their voucher, as well as providing a printed copy if needed.

Important info

- Vouchers must be used by 30 June 2026.
- More details, including FAQs, how to register, and full terms and conditions, are available at ccc.tas.gov.au/tipvoucher

This trial supports our commitment to being an environmentally responsible city.



Your year in the community starts here!

Page 05

02

Mayor's message

A message from our Mayor Brendan Blomeley

04

Good news for dog walkers

It's the end of beach restrictions!

06

Looking forward

Messages from your Councillors

FROM YOUR MAYOR

Mayor's message

IT'S HARD TO BELIEVE IT'S ALREADY MARCH, BUT 2026 IS QUICKLY SHAPING UP TO BE AN IMPORTANT YEAR FOR CLARENCE - ONE THAT LOOKS AHEAD TO THE NEXT DECADE AND THE KIND OF CITY WE WANT TO BUILD TOGETHER.

Clarence is a highly engaged community, and we know our residents, businesses, community groups and young people care deeply about shaping the future of the city.

We have been actively connecting with the community to better understand local needs, hear new ideas and strengthen our relationships with the people who live, work and spend time here.

We are currently evaluating extensive community engagement to help shape our Strategic Plan and vision for the next 10 years. Through surveys, pop-ups, workshops and conversations, we have listened carefully to what matters most to our community, from how we plan and design our places, to the services we deliver and how we care for our environment.

These conversations are vital. They help ensure our long-term planning reflects the aspirations, needs and values of our community, and they support open, transparent decision-making.

We have heard a strong call to focus on creating safer, greener and more welcoming public spaces, improving access and connectivity, and supporting opportunities for creativity, recreation and wellbeing.

While community engagement is not a vote, and not every idea can be adopted, all feedback helps us understand local impacts, improve how projects are designed and delivered, and plan for future opportunities.

Engagement helps build a shared vision for Clarence's future, one that supports strong, connected communities and a city that continues to grow in a way that is sustainable, inclusive and responsive.

Rewilding begins

Rewilding works have begun in Rosny Parklands, starting with the removal of woody weeds.

Woody weeds are invasive trees and shrubs that spread quickly, crowd out native plants and impact local wildlife. Removing them will create space for native vegetation to grow, helping restore healthier, greener landscapes.

These works are a first step in implementing the City Heart Plan, which sets out a long-term approach to improving public spaces, connectivity and community facilities in the city centre.

Visit ccc.tas.gov.au/city-heart to learn more about City Heart projects, or to view the Plan.



Clarence is a highly engaged community, and we know our residents, businesses, community groups and young people care deeply about shaping the future of the city.

Thank you to everyone who has shared their views and experiences. Your contributions help us plan for the future with care, purpose and a clear understanding of what matters most to our community.

Brendan Blomeley
City of Clarence Mayor



Photo: English Broom is a highly invasive woody shrub

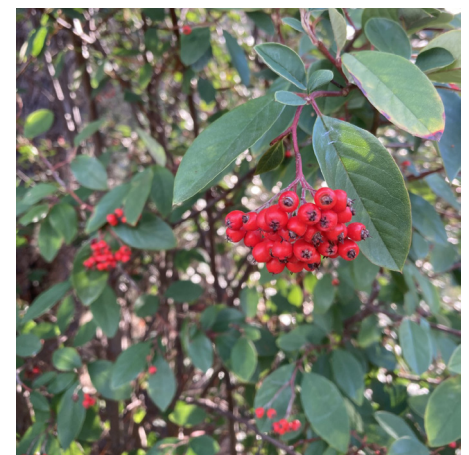


Photo: Cotoneaster is a perennial woody shrub

COUNCIL UPGRADES

What's happening in 2026?

FROM PLAYGROUND UPGRADES AND NEW COMMUNITY FACILITIES TO MAJOR ROAD AND STORMWATER WORKS, 2026 WILL BE A YEAR OF DELIVERY, ENGAGEMENT AND IMPROVEMENT ACROSS THE CITY.

To keep up to date with our works, initiatives, and programs happening across Clarence, please visit the City of Clarence website. Here are just some of what we have planned this year.

Sporting facilities

Significant investment will support local sport and community use, with the new sports pavilion at Clarendon Vale Oval nearing completion. Planning for upgrades to the oval surface underway and sports field lighting to be installed by July.

Consultation for upgrades to Clarendon Vale youth precinct, including a new multi-use court is underway.

Solar panels will be installed at Sandford Hall to strengthen its role as an emergency evacuation centre while reducing operating costs.

Planning and design work is also underway for major upgrades to the Cambridge Memorial Oval, to coincide with Stage 2 of the expansion of Cambridge Primary School.



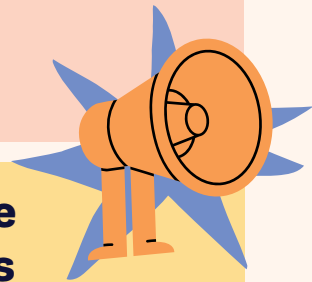
Photo: Clarendon Vale Oval Pavillion

Infrastructure and roads

Major infrastructure works continue across Clarence, with the Wentworth Street stormwater upgrade in Bellerive starting soon, supported by \$2.6 million in state government funding.

The first stage of upgrades to Pass Road, Mornington are due to start this year after the project reached key planning milestones. An Aboriginal Heritage Assessment has been completed, with approval granted by Aboriginal Heritage Tasmania.

City of Clarence engineering plans are approximately 90% complete, with final drafting, internal approvals and a Natural Values Assessment underway to confirm impacts on vegetation and required protection measures.



Clarence Consults

Open Now

- Community Wellbeing Plan
- Clifton Beach Master Plan

Coming Soon

- Dog Management Policy
- Clarendon Vale Youth Precinct

What We Heard

Engagement results can also be found on the Your Say website:

- Creating Tomorrow, Today (Strategic Plan 2025-2035)
- Safer Speeds, Safer Roads (Speed Limit Review)

For engagements happening early in 2026 and for all our project updates, please visit the Your Say Clarence website at yoursay.ccc.tas.gov.au or **scan the QR code.**

Bushfire preparedness works

As the peak fire danger period ends, our fire crews are looking ahead to reduce the bushfire risk for next season.

From now, we will undertake several fuel reduction and ecological burns across Clarence, along with track and fuel break maintenance in key reserves including Bedlam Walls, Rokeby Hills, Pilchers Hill, Glebe Hill and Mortimer Bay.

New fire trail signage will also be installed to help crews and emergency services navigate reserves safely during emergencies.

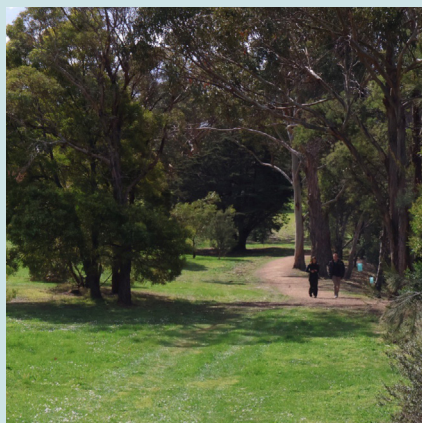


Photo: Hazard burning at Pilchers Hill, Geilston Bay

Parks, playgrounds and open spaces

Improvements to neighbourhood parks and open spaces continue, with the Cambridge Dog Park on track for completion in the first part of the year.

Walking, running and cycling opportunities will be enhanced through completion of the Rosny Parklands circuit track, upgrades to the Seven Mile Beach Single Hill circuit track and new kayak access facilities to be built at Rokeby Beach.



DOG RESTRICTIONS LIFTED

Good news for dog walkers

FROM 1 MARCH 2026, SUMMER BEACH DOG RESTRICTIONS WILL BE LIFTED, MEANING YOUR FOUR-LEGGED FRIENDS CAN ENJOY MORE OFF-LEAD TIME ON SELECTED BEACHES.

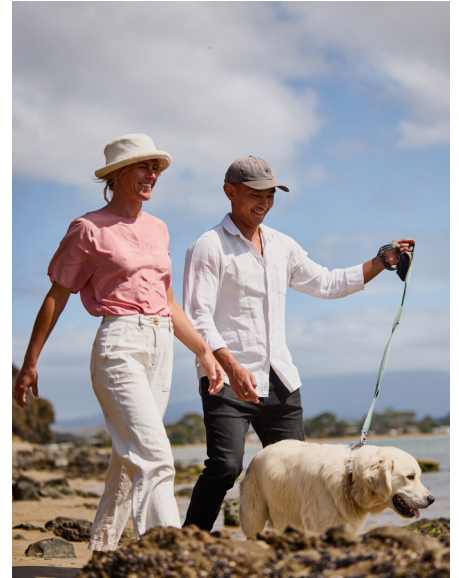
As always, dogs must be kept under effective control and owners are asked to follow the direction of all applicable signage. While restrictions have eased, it's important to ensure your dog does not disturb other

beach users, wildlife or sensitive coastal environments.

Dogs are still not permitted on the following beaches:

- Bellerive Beach (west of the Beach Street access)
- Little Howrah Beach

Let's all do our part to keep our beaches safe, shared and enjoyable for everyone.



Property valuations update

In July 2025, the Office of the Valuer General commenced a fresh property valuation across Clarence. This is a statutory process done every six years to ensure property values are reflective of market movements and up to date. Property owners can expect to start receiving their new Notice of Valuation from May/June 2026.

Once you receive your notice, if you don't agree with your valuation, you may be able to lodge an objection. Objections need to be made before the 2026/27 Notice of Rates are issued.

Please visit ccc.tas.gov.au/rates for more information and answers to FAQs.



Creating safe spaces

OUR COMMUNITY THRIVES WHEN EVERYONE FEELS SAFE IN PUBLIC SPACES.

Our trial youth program, Rosny Arvos, resumed at the start of Term 1 and is one of the ways we are supporting community safety by creating casual, safe and welcoming spaces for young people.

Held on our lawns from 2.30pm to 4.30pm, Monday to Thursday, the program offers young people aged 12–24 a range of free activities, along with food and drinks. Rosny Arvos is delivered in partnership with Mission Australia Youth Beat, Pulse Youth Health, Eastern Shore Headspace and HOMEBASE.

It provides opportunities for social connection, recreation and positive engagement, helping young people enjoy their free time safely.

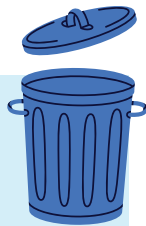
Remember, if you ever feel unsafe or witness concerning activity, contact the police immediately by calling 000, or for non-urgent matters, the police assistance hotline on 131 444.

Community safety is a shared responsibility. Initiatives like the Rosny Arvos program, alongside infrastructure improvements, aim to support positive behaviour and provide reassurance for the community.

Together, we can create environments where everyone feels safe and supported.

For more info visit ccc.tas.gov.au/rosnyarvos

Bin issues? We're here to help



IF YOUR BIN WAS MISSED, NOT FULLY EMPTIED, OR DAMAGED, PLEASE CONTACT CLEANAWAY DIRECTLY.

Their dedicated support hotline can help resolve issues quickly.

Call Cleanaway 1800 329 084

Or if you'd like to request a new bin go to ccc.tas.gov.au/waste or call us on 6217 9500.

COMMUNITY EVENTS

Clarence community corner

ARE YOU LOOKING FOR WAYS TO GET ACTIVE, SOCIALISE, OR TRY SOMETHING NEW?

We have plenty of free activities for everyone to enjoy, no matter your age or ability.



Photo: Welcoming new volunteer Pramila Bhandari at a special end of year celebration lunch in December 2025.

Volunteering

By giving your time, you're helping to build a community where people feel supported, valued and included.

Our volunteers make a real difference every day, whether it's providing social support, caring for our natural environment, contributing to committees or helping deliver community programs and local events.

No matter the role, every contribution helps strengthen our city.

Volunteering also offers the chance to meet new people, share your skills and be part of something meaningful, all while making a positive impact close to home.

To register as a volunteer and to learn more, visit ccc.tas.gov.au/volunteering or call 03 6217 9630.

Our Shared Space

Our Shared Space is a community gathering program where everyone is welcome, designed to connect older adults and young people through shared activities and conversation. Pop in for workshops, events, or just to meet new friends and enjoy a sense of connection in your neighbourhood.

These programs are just some of the ways Clarence brings people together and helps our community stay active, connected, and engaged.

For more information visit ccc.tas.gov.au/age-friendly and click on "Our Shared Space".



Photo: New participants at the South Arm location.

Fitness in the Park

This free fitness program is open to everyone, with sessions led by qualified fitness professionals. Activities include aerobic exercise, circuits, balance, core strength, walking, and more – all adaptable to different fitness levels and abilities.

The current program has extended the locations across Clarence with sessions held in Richmond, Lindisfarne, Rosny, South Arm, and Bellerive every week.

For full details and session times from Monday to Friday, visit ccc.tas.gov.au/fitness

No bookings required - just turn up.

Gentle Exercise

If you're after a gentle way to keep moving indoors, Gentle Exercise could be just what you're looking for. These sessions provide a supportive and welcoming environment, particularly suited to older residents, people living with disability or chronic illness, or anyone whose mobility has been affected by illness or injury.

It's an ideal option if you're easing back into exercise, retired and looking for more than just a walk around the block, or wanting a fun and social way to stay active.

When: Every Friday at 9am

Where: Rokeby Trust Hall,
5 Church Street, Rokeby

Cost: Free to register on 6217 9500

Grants now open

Applications are now open for City of Clarence grants and sponsorship programs, supporting local projects, events and initiatives that benefit our community.

Funding is available through:

- Community Grants
- Cultural and Creative Grants
- Environment and Biodiversity Grants

Hurry! Applications close Saturday 21 March. Find out more and apply at ccc.tas.gov.au/community-grants

COUNCILLOR FOCUS

From your Councillors


**COUNCILLOR
JAMES WALKER**

I've found ratepayers' expectations of council are very reasonable: reliable services, well-maintained roads and footpaths, and quality places for recreation like parks and playgrounds.

Now there's a push to broaden council's role through legislated changes to the Local Government Act, shifting focus toward community wellbeing. We should learn from New Zealand. Last year, "the four wellbeings" were removed from their Act after being criticised for distracting councils from core community needs during tough times.

What do you think councils should focus on?


**COUNCILLOR
ALLISON RITCHIE**

Stadiums Tasmania has identified Bellerive Oval as a venue it expects to assume responsibility for. As a significant community asset with a rich history, I am committed to keeping it in the ownership of the people of Clarence. I'm pleased Council passed my motion to ensure community involvement in any future decisions regarding Bellerive Oval.

On hard waste, I continue to advocate for support for residents and am hopeful funding will be allocated in the upcoming budget.

I also hope everyone enjoyed the iconic 2026 Clarence Jazz Festival.


**COUNCILLOR
BREE HUNTER**

I wanted to share that I won't be seeking re-election in November. This decision reflects a desire to focus on my career and, just as importantly, to be available for my daughter as she enters her teenage years. Serving as your councillor has been a privilege, and I'm grateful for the opportunity. I hope I've contributed through a focus on sustainable growth, valuing the expertise of our staff, and fostering a constructive and respectful environment among councillors.

I encourage young professionals, particularly women, to run for Council. Our city benefits from future-focused perspectives, collaborative leadership, and a willingness to listen.


**COUNCILLOR
DANIEL HULME**

For too long the pattern of residential development in Greater Hobart, including the City of Clarence, has been low-density urban sprawl.

This has contributed to worsening housing affordability, traffic congestion and rising infrastructure costs, all of which are threats to lifestyle and the cost of living.

Thankfully, the draft Southern Tasmanian Regional Land Use Strategy has recognised the problem, and promotes the development of medium-density housing such as apartments, townhouses and terraces in activity centres.

The ambitious targets in the STRLUS will only be met through local policies and strategies, such as City of Clarence's City Heart Plan.

Your representatives


**Mayor
Brendan Blomeley**

0413 972 307
clr_bbblomeley@ccc.tas.gov.au


Jade Darko

0401 420 208
clr_jdarko@ccc.tas.gov.au


Richard James

0418 135 808
clr_rjames@ccc.tas.gov.au


**Deputy Mayor
Allison Ritchie**

0474 356 640
clr_aritchie@ccc.tas.gov.au


Emma Goyne

0418 396 040
clr_egoyne@ccc.tas.gov.au


Wendy Kennedy

0438 100 446
clr_wkennedy@ccc.tas.gov.au


Beth Warren

0438 439 219
clr_bwarren@ccc.tas.gov.au


Daniel Hulme

0447 000 867
clr_dhulme@ccc.tas.gov.au


Tony Mulder

0428 685 337
clr_tmulder@ccc.tas.gov.au


Heather Chong

0408 604 509
clr_hchong@ccc.tas.gov.au


Bree Hunter

0497 953 187
clr_bhunter@ccc.tas.gov.au


James Walker

0421 320 669
clr_jwalker@ccc.tas.gov.au




Get in touch

03 6217 9500
—
38 Bligh Street, Rosny Park,
Tasmania 7018, Australia

PO Box 96, Rosny Park
TAS 7018
—
clarence@ccc.tas.gov.au

 ccc.tas.gov.au

 /ClarenceCityCouncil

 @cityofclarence