



2026-27 FINANCIAL YEAR

Budget message

WORKING TOWARDS A THRIVING AND SUSTAINABLE CLARENCE.

The City of Clarence 2026-27 Annual Budget sets a clear course for the year ahead, balancing investment in essential infrastructure and services with responsible long-term financial management.

As one of Tasmania's fastest-growing regions, Clarence continues to experience increasing demand for roads, footpaths, community facilities, parks, sporting infrastructure and environmental management. This year's budget responds to those needs while remaining focused on delivering value for the community and preparing for future growth.

A rate increase of 4.96%, excluding state government levy increases, has been carefully considered to balance affordability with the need to maintain essential services, renew ageing infrastructure and deliver important community projects.

The budget supports the delivery of the Strategic Plan 2025-2035 and the priorities identified in our Annual Plan.

Across the city, investment will focus on maintaining and renewing critical infrastructure, improving connectivity, supporting active and healthy lifestyles, protecting natural environments and strengthening community wellbeing.

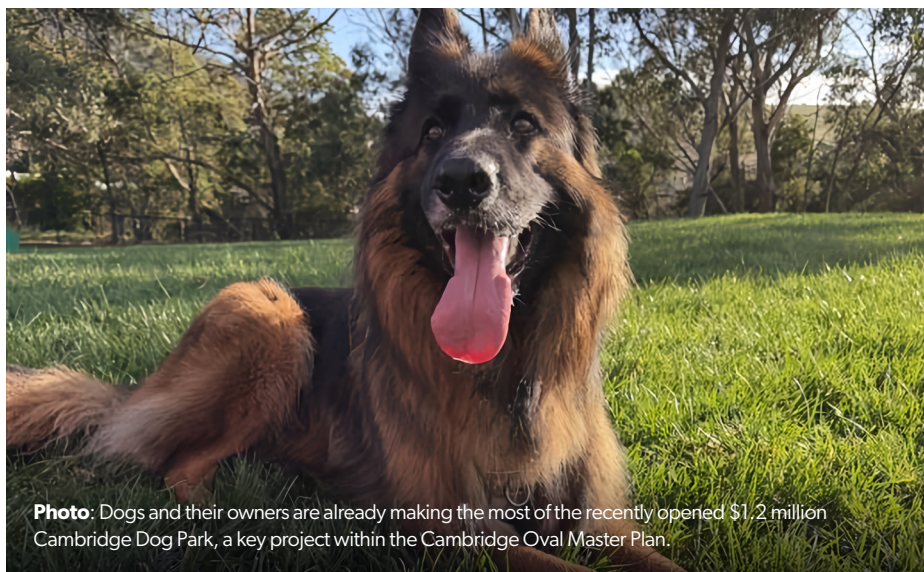


Photo: Dogs and their owners are already making the most of the recently opened \$1.2 million Cambridge Dog Park, a key project within the Cambridge Oval Master Plan.

A capital works program of just over \$32 million will see significant investment in transport, stormwater upgrades, recreation facilities, community buildings and public spaces. These projects are designed to improve how people move around the city, access services and enjoy the places that make Clarence such a desirable place to live.

Major investments include upgrades to roads and footpaths, improvements to sporting and recreation facilities, stormwater upgrades that enhance resilience to future weather events, and community developments to support growing neighbourhoods.

The budget also reflects a commitment to environmental stewardship through projects that protect and enhance

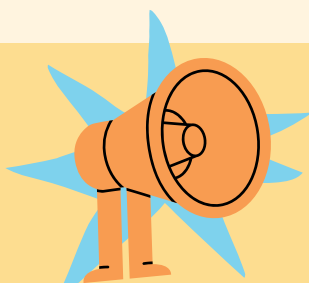
important natural areas, improve waste management services and support ongoing bushfire hazard reduction.

While inflationary pressures and rising costs continue to present challenges, we remain committed to maintaining a strong financial position. We have been able to do this through careful long-term planning, responsible budgeting and a disciplined approach to expenditure while continuing to deliver services the community expects.

Importantly, the budget supports both current and future generations. Through ongoing investment in community assets and infrastructure, Clarence is helping to ensure the city remains connected and resilient.

THE \$32 MILLION CAPITAL WORKS PROGRAM IN THE 2026-27 BUDGET WILL INCLUDE:

Seven Mile Beach Esplanade reconstruction \$1,050,000	Sandford Oval change room design \$35,000	Rokeby Village Green Cricket infrastructure renewal \$150,000	Harmony Lane kerb and footpath upgrade \$630,000
Rosny Early Learning Centre redevelopment \$1,044,152	Anulka Street and Carella Street stormwater upgrade \$700,000	Lindisfarne Ferry Terminal Natone Street infrastructure \$250,000	Clifton Beach Surf Life Saving Club building upgrades \$555,000
Mortimer Bay Coastal Trail Stage 3 upgrade \$120,000	Cambridge Precinct Oval ground lighting, new pavilion and parking \$7,460,000	Bellerive Beach Park new public toilets design \$75,000	School Road upgrades \$620,000



Find out how to have your say this winter.

Page 05

02 Mayor's message

A message from our Mayor Brendan Blomeley

03 Celebrating local talent

Information about 2026 community grants

06 Looking forward

Messages from your Councillors

FROM YOUR MAYOR

Mayor's message

AS WE MOVE INTO A NEW FINANCIAL YEAR, THERE'S PLENTY HAPPENING, AS WE INVEST IN PROJECTS, PROGRAMS AND SERVICES THAT SUPPORT OUR GROWING COMMUNITY AND HELP MAKE CLARENCE SUCH A WONDERFUL PLACE TO LIVE, WORK AND ENJOY.

At our recent Budget Breakfast, we shared our exciting plans for the year ahead, from major infrastructure projects to environmental initiatives and community spaces designed to keep Clarence connected, active and thriving.

One exciting milestone progressing well as part of our City Heart Plan project is the 1.7km track through Rosny Parklands, with crews now completing the final finishing touches. This new connection creates more opportunities for people to walk, ride, meet with friends and enjoy our beautiful open spaces right in the heart of Clarence. It's wonderful to see more spaces that bring people together and encourage our community to get outdoors and enjoy everything our city has to offer.

We know how important dogs and outdoor spaces are to a large number of people in our community, which is why it was fantastic to officially open the new \$1.2 million Cambridge Dog Park last month. It's been great to see local dog owners and their four-legged companions already making use of the space, and I'm looking forward to seeing this become a well-loved community hub for years to come.

Looking ahead, preparations continue for the rollout of Food Organics and Garden Organics (FOGO) in January 2027, which will work alongside our existing green waste service to meet our waste reduction goals.

Nominations are also now open for the Clarence Citizen of the Year Awards 2026. These awards are one of the biggest and most meaningful annual events on our calendar, and something



I'm incredibly proud to be involved in each year. They give us the opportunity to celebrate the individuals, organisations and events that make our city such a caring, generous and connected community.

“There's plenty happening, as we invest in projects, programs and services that support our growing community and help make Clarence such a wonderful place to live, work and enjoy.”

Every year I'm inspired by the people who quietly give their time to support others, making a genuine difference in the lives of those around them. If you know someone who deserves recognition, I encourage you to take the time to nominate them before 20 July.

As always, thank you to everyone who contributes to our vibrant, welcoming and connected community. It's the people who make this city such a special place to call home.

Brendan Blomeley
City of Clarence Mayor

WE ARE PART OF YOUR COMMUNITY

WE WORK AT COUNCIL BECAUSE, LIKE YOU, WE LOVE THIS CITY.

We're committed to making the place we live and work in, better for us all. And like you, we have the right to feel safe and respected at work, free from the fear of aggressive or threatening behaviour.

In our community and in our workplace, acts of abusive or belittling behaviour, bullying, or threats are never ok.

When we have a difference of opinion, please act with kindness and respect. Productive conversations build stronger communities.

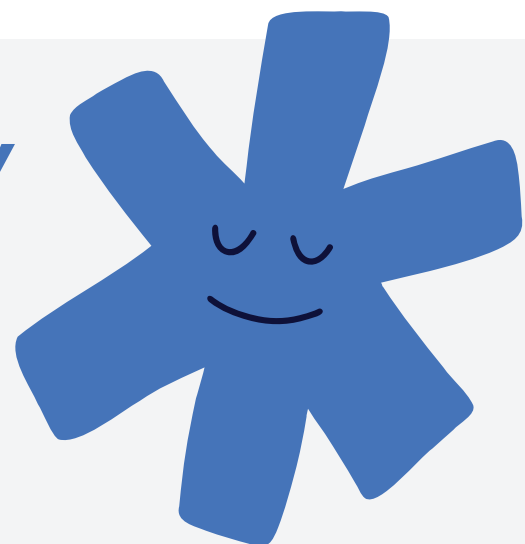




Photo: Members of the 3-in-a-Bed crew, grant recipients.

Celebrating and funding local talent

Our grants program is now open, offering grants of up to \$10,000 to support local projects, events and initiatives that benefit the community.

Funding is available for projects that help build connected and inclusive communities, support healthy and active living, encourage cultural and creative activity, improve community safety, promote sustainability, strengthen local participation and contribute to a vibrant local economy.

We encourage anyone with a project idea to get in touch before applying, particularly if they are unsure about eligibility or the application process. We can provide guidance to help ensure applications are on the right track and have the best chance of success.

Recent grant recipient Owen Tubb said grant support was instrumental in bringing his theatre production 3-in-a-Bed to life at Rosny Barn.

"It couldn't have gone ahead without support from staff at City of Clarence," he said.

"The funding meant we could pay our actors and production crew, while the support from the Rosny Farm team made the whole process much smoother."

Owen said the performances helped bring theatre to new audiences on the eastern shore and created opportunities for emerging local creatives.

Katie Kristensen from East Side Repair Café said grant funding helped expand the group's recycling and waste reduction initiatives.

"We wanted to encourage people to think twice before throwing things away," she said.

"The grants allowed us to introduce recycling options for hard-to-recycle items and work with start-up recycling businesses to give materials a new life."

Applications are open until 16 September. Details are available at ccc.tas.gov.au/grants, or by contacting us on 6217 9500 for support before submitting an application.



Photo: Eastside Repair Café good works in action.

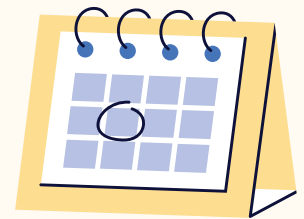
RATES

Revaluation update

The Office of the Valuer-General's revaluation, originally anticipated for this financial year, has been delayed. As a result, existing valuation data will continue to be used for the distribution of rates during 2026–27, with updated valuations expected to be applied from 2027–28.

Visit our website for more updates:

ccc.tas.gov.au/rates



COMMUNITY EVENTS

Save the date

WE HAVE SEVERAL IMPORTANT COMMUNITY AWARENESS WEEKS AND EVENTS COMING UP

NAIDOC Week

5 – 12 July

National Homelessness Week

3 – 9 August

Dementia Action Week

21 – 27 September

Mental Health Week

3 – 11 October

Mental Health Week Community Walk

Sat 3 October 11am – 1pm, Rosny Farm.

Seniors Month - Celebrate Ageing

1 – 31 October

International Day of People with Disability

3 December

Keep an eye on our website and social media channels for more information about these events and activities.

COMMUNITY AWARDS

Know someone making a difference?

THE ANNUAL CITY OF CLARENCE CITIZEN OF THE YEAR AWARDS SHINE A LIGHT ON THE PEOPLE, GROUPS AND EVENTS THAT MAKE OUR COMMUNITY STRONGER, KINDER AND MORE CONNECTED.

Many of the people who do incredible things in our community do so quietly, driven by passion rather than recognition. They volunteer their time, support others and lead positive change simply because they care about Clarence and the people in it.

This is your chance to recognise those efforts and make sure they're celebrated.

The awards will be presented across the following categories:

- **Citizen of the Year:** For individuals who have made a lasting impact through long-term dedication and service.
- **Senior Citizen of the Year:** Recognising seniors who have demonstrated leadership, commitment and ongoing service to the community.
- **Young Citizen of the Year:** Celebrating young people who are creating positive change and inspiring others.
- **Community Event or Organisation of the Year:** Honouring events or organisations that bring people together and make a meaningful community impact.



- **Community Harmony Award:** Recognising individuals or organisations that have made a significant contribution to multicultural inclusion and community harmony.
- **Local Hero Award:** Celebrating those who make a big difference through small, everyday acts that strengthen connection and support within their local area.

Nominate today!

Nomination forms are available on our website at ccc.tas.gov.au/citizen, with hard copies available at Council Chambers, 38 Bligh Street, Rosny. Nominations close on Monday 20 July 2026.



Photo: A moment from the 2025 Citizen of the Year Awards, featuring performances by the Clarence High School Band as we celebrated the achievements of community members across Clarence.

FOGO coming to Clarence in 2027

FROM JANUARY 2027, WE WILL INTRODUCE A FOOD ORGANICS AND GARDEN ORGANICS (FOGO) SERVICE AS PART OF A STATEWIDE MOVE TO REDUCE LANDFILL, CUT EMISSIONS AND RECOVER VALUABLE RESOURCES.

What is FOGO?

FOGO stands for Food Organics and Garden Organics and means food scraps can be added in with garden waste (green bin) instead of landfill. This includes fruit and vegetable scraps, meat and bones, dairy, coffee grounds, and garden clippings such as grass, leaves and small branches. These materials are processed into compost for use in agriculture and landscaping.

Why is it being introduced?

Much of what goes into household waste is organic. When sent to landfill, it produces methane, a harmful greenhouse gas. FOGO will help reduce landfill, lower emissions and turn waste into useful compost products.

Will my bins change?

Your food scraps will go into your existing green waste bin, and you'll receive a convenient kitchen caddy to help get started.

Do I have to go with FOGO?

Yes. If you have a green organics bin (your green bin), it will change to a fortnightly collection and will include food organic and green waste combined.

What do I need to do now?

Nothing at this stage. We'll share updates, guides and tips to help households prepare ahead of the 2027 launch.

For more information, follow us on social media and learn more on our website ccc.tas.gov.au/fogo





COMMUNITY NEWS

A new home for off-lead play

CLARENCE'S NEWEST MAJOR COMMUNITY SPACE, THE CAMBRIDGE DOG PARK, IS NOW OPEN, GIVING LOCAL DOG OWNERS A SAFE, INCLUSIVE AND ENGAGING OFF-LEAD AREA TO ENJOY WITH THEIR PETS.

At 1.5 hectares, it is one of the largest dedicated off-lead dog parks in southern Tasmania, and a significant new addition to Clarence's network of open spaces. This \$1.2 million facility has been designed to cater for a wide range of dogs, from highly social pups to those who prefer a quieter environment.

An opening event was held at the park in June bringing together residents, Councillors, staff and members of the local dog community to celebrate the new park and recognise the community input that helped shape the project.

The project has transformed the site with just over 6,000 square metres of new turf for dogs to run and play, alongside accessible walking paths, a new car park and more than 70 trees that will grow to provide shade, habitat and a welcoming parkland setting. The design draws on natural elements and varied terrain to create a sensory-rich experience for dogs, while also ensuring accessibility and ease of use for owners.

We encourage the community to visit, enjoy the park, and make the most of this new space for dogs and their owners to connect and play.



Have Your Say

We want to hear from you! We regularly seek community feedback on projects, plans and initiatives that help shape the future of Clarence.

To take part and see the outcomes of previous surveys scan the QR code or go to yoursay.ccc.tas.gov.au

Scan me to have your say



COUNCILLOR FOCUS

From your Councillors


**COUNCILLOR
BETH WARREN**

I'm not re-contesting October's election, so would like to thank you for your support over the last eight years. The best part of any job is the people. It can also be the worst part.

I've loved getting to know the people of Clarence. I'm in awe of the passion and energy you have for shaping the future of your community.

I'm proud to have been your voice in making Clarence a better place to live, with our enviable green spaces and coastal paths.

I hope to see a kinder council that works together respectfully to focus on the community.


**COUNCILLOR
RICHARD JAMES**

I have been active at recent budget workshops in discussing Clarence Council's Operational Budget, Capital Works Budget and Fees and Charges Schedule for 26/27 financial year.

I support Clarence Council rates being set less than the recent CPI Index, audit review of footpaths with a 'poor' and 'failed' condition rating, and I supported the continuation of the Waste Voucher Program, however it was ultimately decided the program would not continue.

I believe getting the right balance on expenditure for 'essential' capital works projects and for 'aspirational' projects listed in Council's forward estimates works programmes.


**COUNCILLOR
EMMA GOYNE**

Local government politics is the fine art of saying "no" so gently it sounds like "perhaps... after a few more consultations".

To my community: I wholeheartedly apologise for not achieving the world-changing impact my naively optimistic 2023 self was absolutely convinced I would. Turns out enthusiasm and reality occasionally have a polite disagreement.

With elections this year, that familiar spark of optimism is back—surely this time everything will change... right?

Nevertheless, we persist and I will be on your ballot papers later this year- continuing to do the very best I can within the confines of local government.

Your representatives


**Mayor
Brendan Blomeley**

0413 972 307
clr_bblomeley@ccc.tas.gov.au


Emma Goyne

0418 396 040
clr_egoyne@ccc.tas.gov.au


Wendy Kennedy

0438 100 446
clr_wkennedy@ccc.tas.gov.au


**Deputy Mayor
Allison Ritchie**

0474 356 640
clr_aritchie@ccc.tas.gov.au


Daniel Hulme

0447 000 867
clr_dhulme@ccc.tas.gov.au


Tony Mulder

0428 685 337
clr_tmulder@ccc.tas.gov.au


Heather Chong

0408 604 509
clr_hchong@ccc.tas.gov.au


Bree Hunter

0497 953 187
clr_bhunter@ccc.tas.gov.au


James Walker

0421 320 669
clr_jwalker@ccc.tas.gov.au


Jade Darko

0401 420 208
clr_jdarko@ccc.tas.gov.au


Richard James

0418 135 808
clr_rjames@ccc.tas.gov.au


Beth Warren

0438 439 219
clr_bwarren@ccc.tas.gov.au



Get in touch